

A PROJECT BY



ORHAN TOWER, ADJACENT
UNIVERSITY TOWN, PESHAWAR

Follow us on:



031-111-ORHAN (67426)
hello@orhangroup.pk
www.orhangroup.pk



ORHAN TOWER
ADJACENT UNIVERSITY TOWN, PESHAWAR

BUILDING DREAMS



ABOUT THE PROJECT

The main feature of our project is “location” our location diversifies our presence from other projects as our location is accessible from all leading areas of Peshawar. Since we are in the heart of Peshawar and you know we are at almost average 5-7 min drive from everywhere, Hayatabad, university town, ring road, airport, saddar cantt, schools, Peshawar University etc. Due to the fact of our prime location and amenities alongside, it is certainly worthy at ORHAN TOWER. Our innovative construction. Well-designed features, and elegant accommodation are rarely found.



A PROJECT BY



PROJECT LOCATION

ORHAN TOWER is located at the prime location of University Town on Canal Road. Placed within a thriving part of the city, the project offers location benefits to both retailers and residents alike, it is;

PROJECT LOCATION:

ORHAN TOWER, ADJACENT UNIVERSITY TOWN, PESHAWAR

TRAVEL DISTANCE

UNIVERSITY ROAD
10 MINS

UNIVERSITY TOWN
5 MINS

AIRPORT
7 MINS

SADDAR CANTT
12 MINS

HAYATABAD
15 MINS

RING ROAD
5 MINS

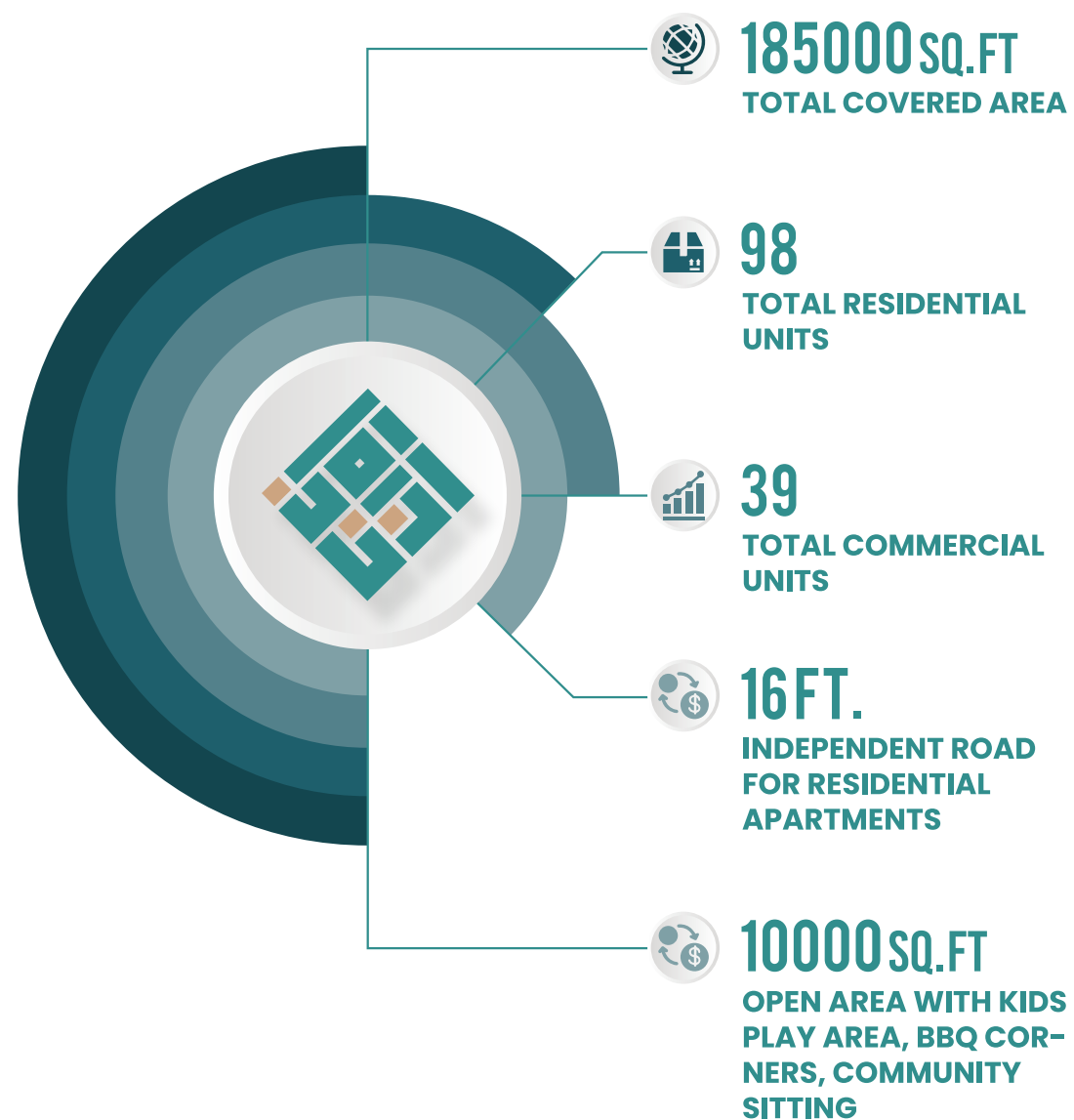


PROJECT KEYNOTES

ORHAN presents a mix of astonishing and breath-taking numbers:



**NOC APPROVED FROM TMA, CIVIL AVIATION,
AIR FORCE, IRRIGATION, WSSP & ENVIRONMENTAL PROTECTION.**



WELCOME TO OUR REAL ESTATE MASTERPIECE, WHERE STEEL,

GLASS, AND MARBLE UNITE IN PERFECT HARMONY

TO REDEFINE LUXURY LIVING

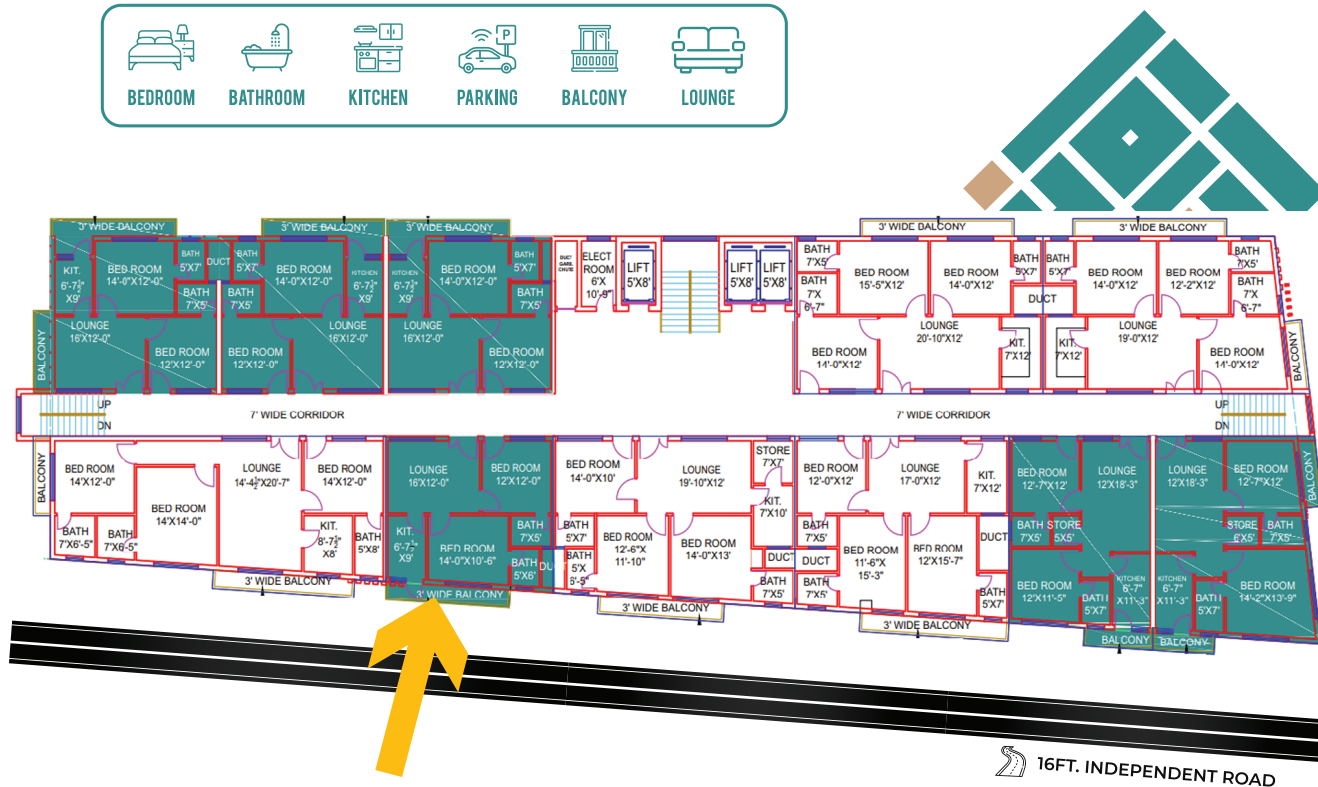


2 BEDROOM APARTMENT

1000 SQ.FT

FLOOR PLAN

Area: 1000 Sqft
 Bedroom: 2
 Bathroom: 2
 Parking: 1
 Lounge: 1
 Kitchen: 1



AVAILABILITY FLOOR WISE

1ST, 7TH, 9TH

APARTMENT LAYOUT



*UNIVERSITY TOWN VIEW

PRICE PLAN

Area (Sq.ft)	Per Sq.ft	Discount	Total Price
1000	9200/-	Not Proposed	9,200,000/-

*45 months payment plan

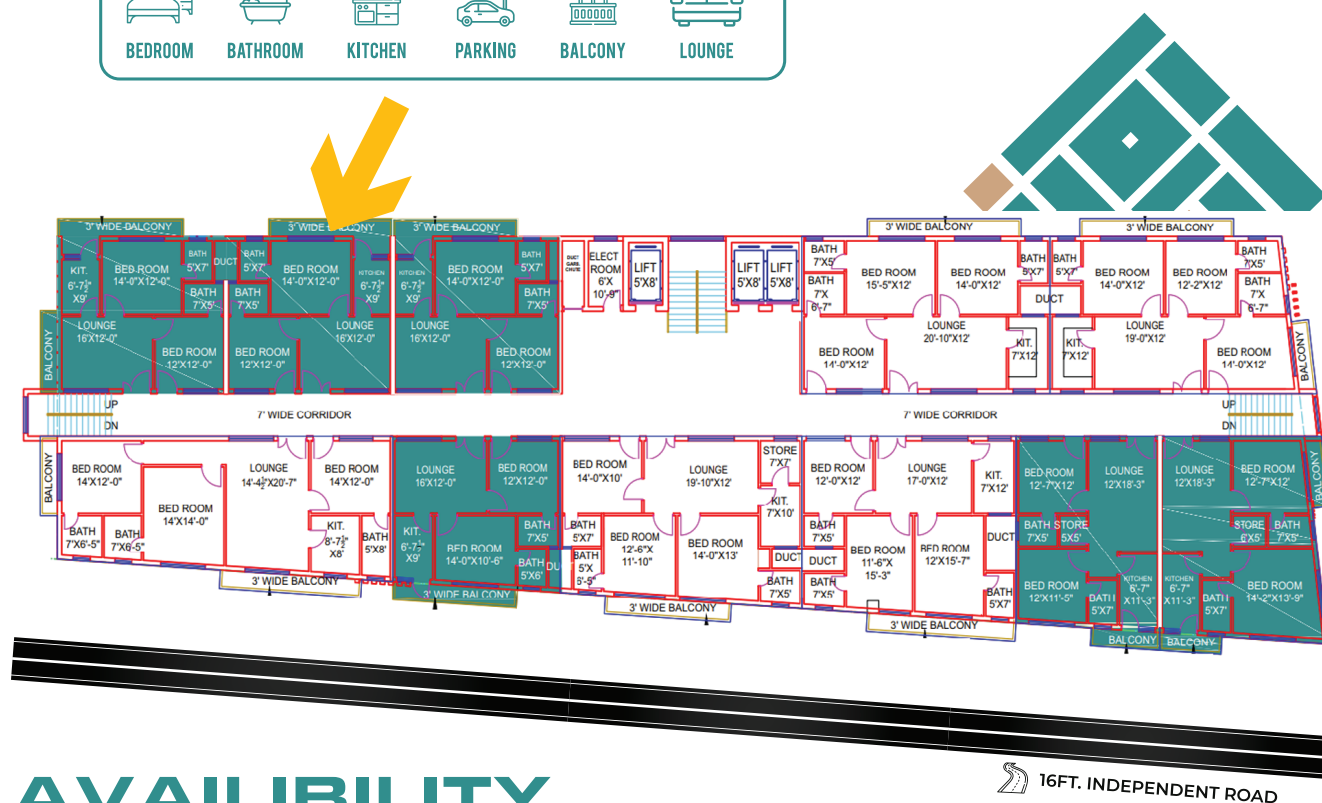
Description	Milestone	%age	Amount
Downpayment	Booking Amount in 2 Months	30%	2,760,000/-
Installments	42 Months Installments	1%	109,524/-
Final Payment	On Possession	20%	1,840,000/-

2 BEDROOM APARTMENT

1049 SQ.FT

FLOOR PLAN

Area: 1049 Sqft
 Bedroom: 2
 Bathroom: 2
 Parking: 1
 Lounge: 1
 Kitchen: 1



AVAILABILITY

FLOOR WISE

GF, 3RD, 5TH, 6TH, 7TH, 8TH, 9TH,

APARTMENT LAYOUT



*AIRPORT VIEW

PRICE PLAN

Area (Sq.ft)	Per Sq.ft	Discount	Total Price
1049	9200/-	Not Proposed	9,650,800/-

*45 months payment plan

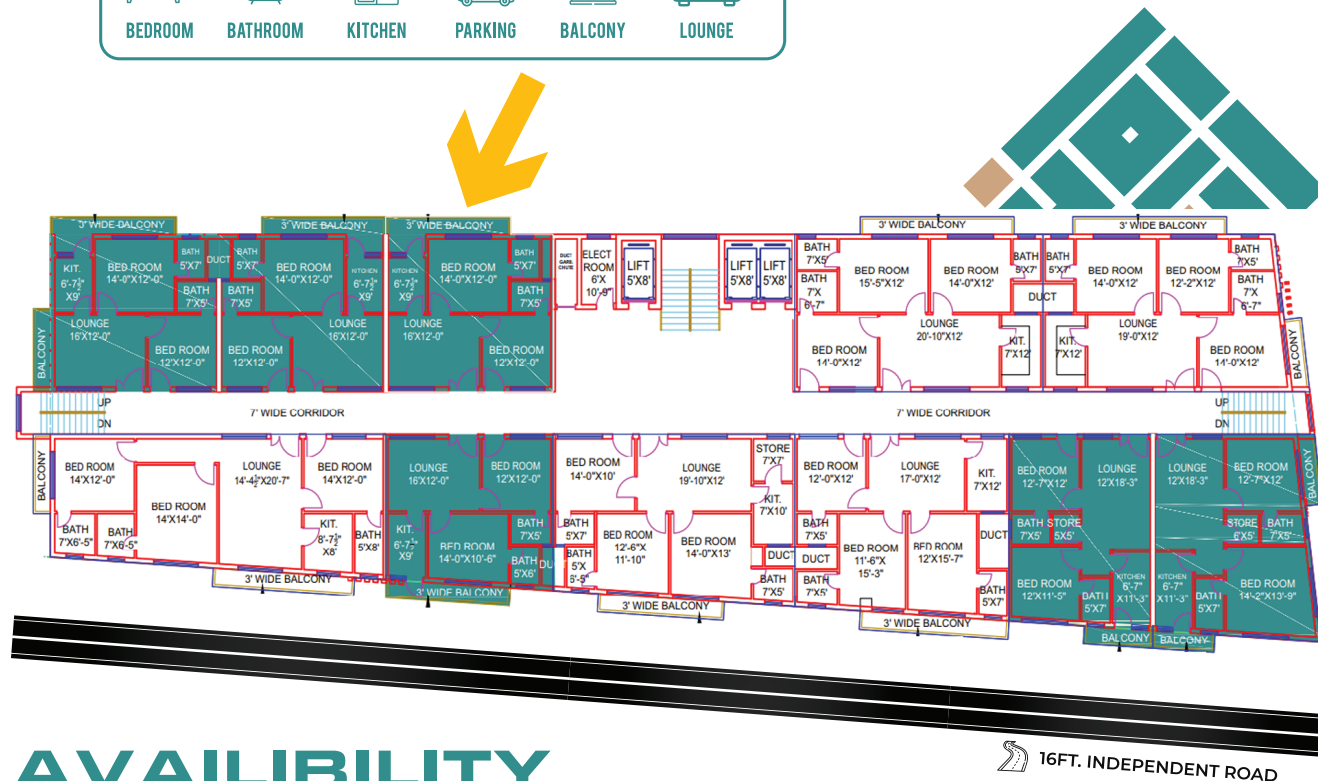
Description	Milestone	%age	Amount
Downpayment	Booking Amount in 2 Months	30%	2,895,240/-
Installments	42 Months Installments	1%	114,890/-
Final Payment	On Possession	20%	1,930,160/-

2 BEDROOM APARTMENT

1062 SQ.FT

FLOOR PLAN

Area: 1062 Sqft
 Bedroom: 2
 Bathroom: 2
 Parking: 1
 Lounge: 1
 Kitchen: 1



AVAILABILITY

FLOOR WISE

GF, 3RD, 5TH, 6TH, 7TH, 8TH, 9TH,

APARTMENT LAYOUT



***AIRPORT VIEW**

PRICE PLAN

Area (Sq.ft)	Per Sq.ft	Discount	Total Price
1062	9200/-	Not Proposed	9,770,400/-

**45 months payment plan*

Description	Milestone	%age	Amount
Downpayment	Booking Amount in 2 Months	30%	2,931,120/-
Installments	42 Months Installments	1%	116,314/-
Final Payment	On Possession	20%	1,954,080/-

2 BEDROOM APARTMENT

1129 SQ.FT

FLOOR PLAN

Area: 1129 Sqft
 Bedroom: 2
 Bathroom: 2
 Parking: 1
 Lounge: 1
 Kitchen: 1

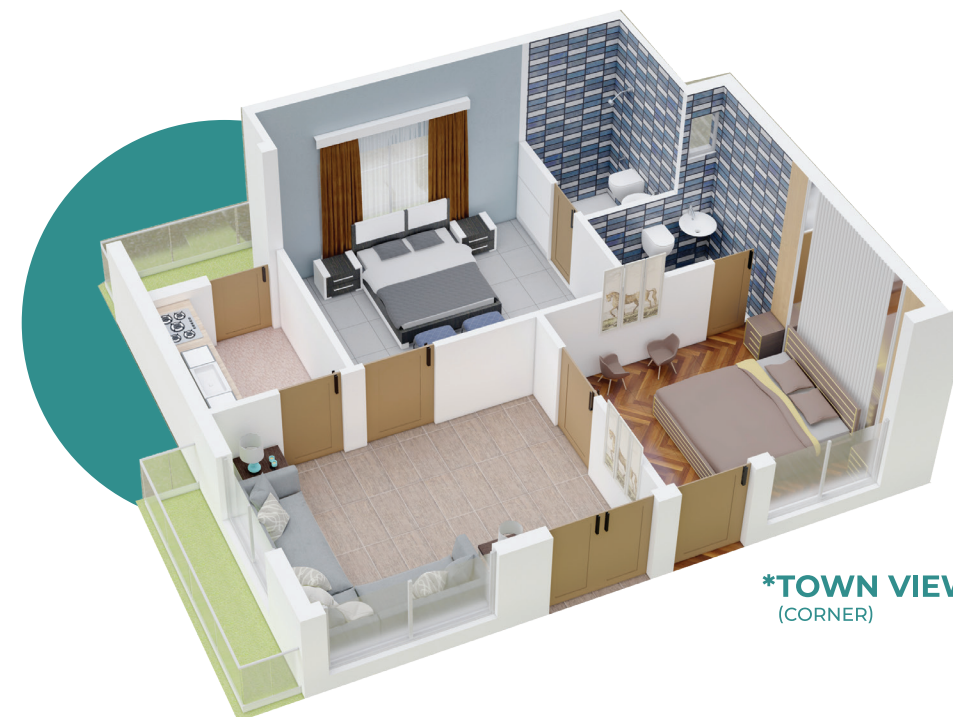


AVAILABILITY

FLOOR WISE

GF, 3RD, 4TH, 7TH, 8TH, 9TH,

APARTMENT LAYOUT



***TOWN VIEW & AIRPORT (CORNER)**

PRICE PLAN

Area (Sq.ft)	Per Sq.ft	Discount	Total Price
1129	9200/-	Not Proposed	10,386,800/-

**45 months payment plan*

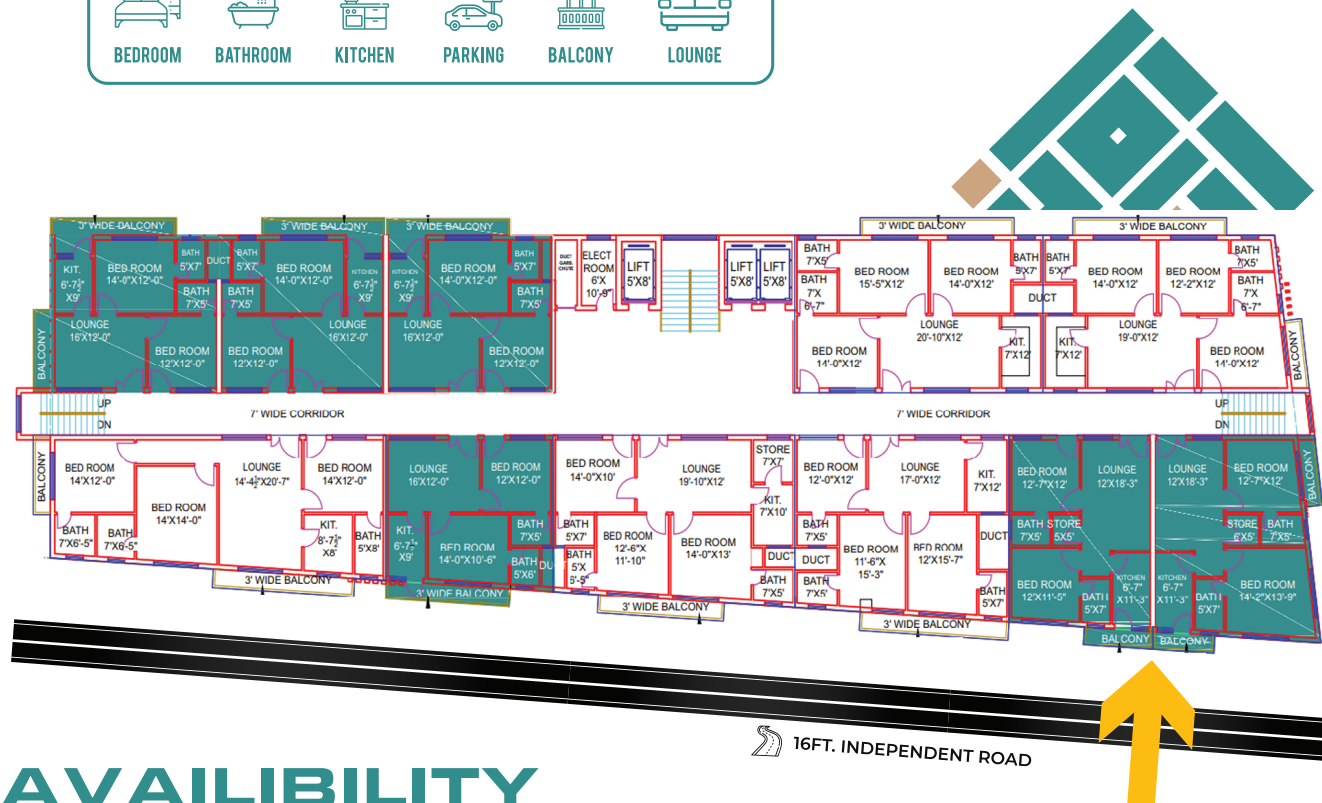
Description	Milestone	%age	Amount
Downpayment	Booking Amount in 2 Months	30%	3,116,040/-
Installments	42 Months Installments	1%	123,652/-
Final Payment	On Possession	20%	2,077,360/-

2 BEDROOM APARTMENT

1309 SQ.FT

FLOOR PLAN

Area: 1309 Sqft
 Bedroom: 2
 Bathroom: 2
 Parking: 1
 Lounge: 1
 Kitchen: 1



AVAILABILITY FLOOR WISE

4TH, 5TH

APARTMENT LAYOUT



*TOWN VIEW (CORNER)

PRICE PLAN

Area (Sq.ft)	Per Sq.ft	Discount	Total Price
1309	9200/-	Not Proposed	12,042,800/-

*45 months payment plan

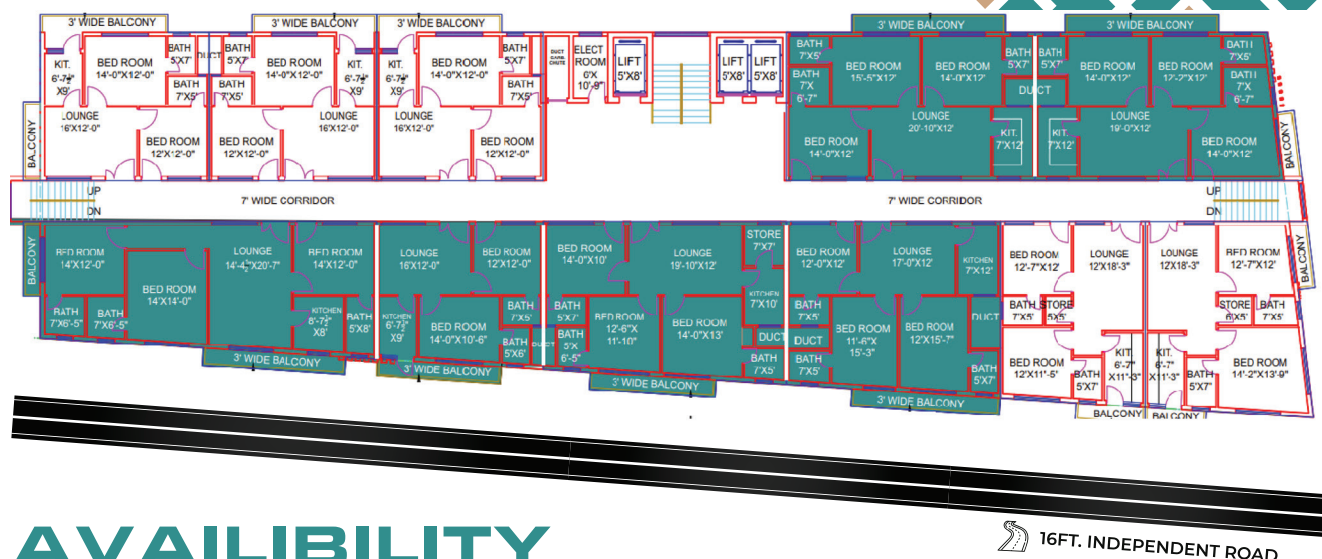
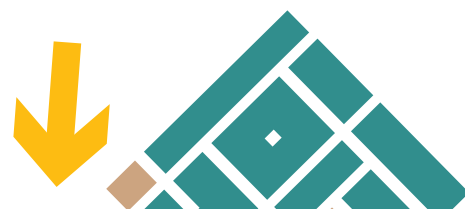
Description	Milestone	%age	Amount
Downpayment	Booking Amount in 2 Months	30%	3,612,840/-
Installments	42 Months Installments	1%	143,366/-
Final Payment	On Possession	20%	2,408,560/-

3 BEDROOM APARTMENT

1411 SQ.FT

FLOOR PLAN

Area: 1411 Sqft
 Bedroom: 3
 Bathroom: 3
 Parking: 1
 Lounge: 1
 Kitchen: 1



AVAILABILITY FLOOR WISE

3TH, 5TH, 6TH, 7TH

APARTMENT LAYOUT



***AIRPORT VIEW**
(SECOND TO CORNER)

PRICE PLAN

Area (Sq.ft)	Per Sq.ft	Discount	Total Price
1411	9200/-	Not Proposed	12,981,200/-

**45 months payment plan*

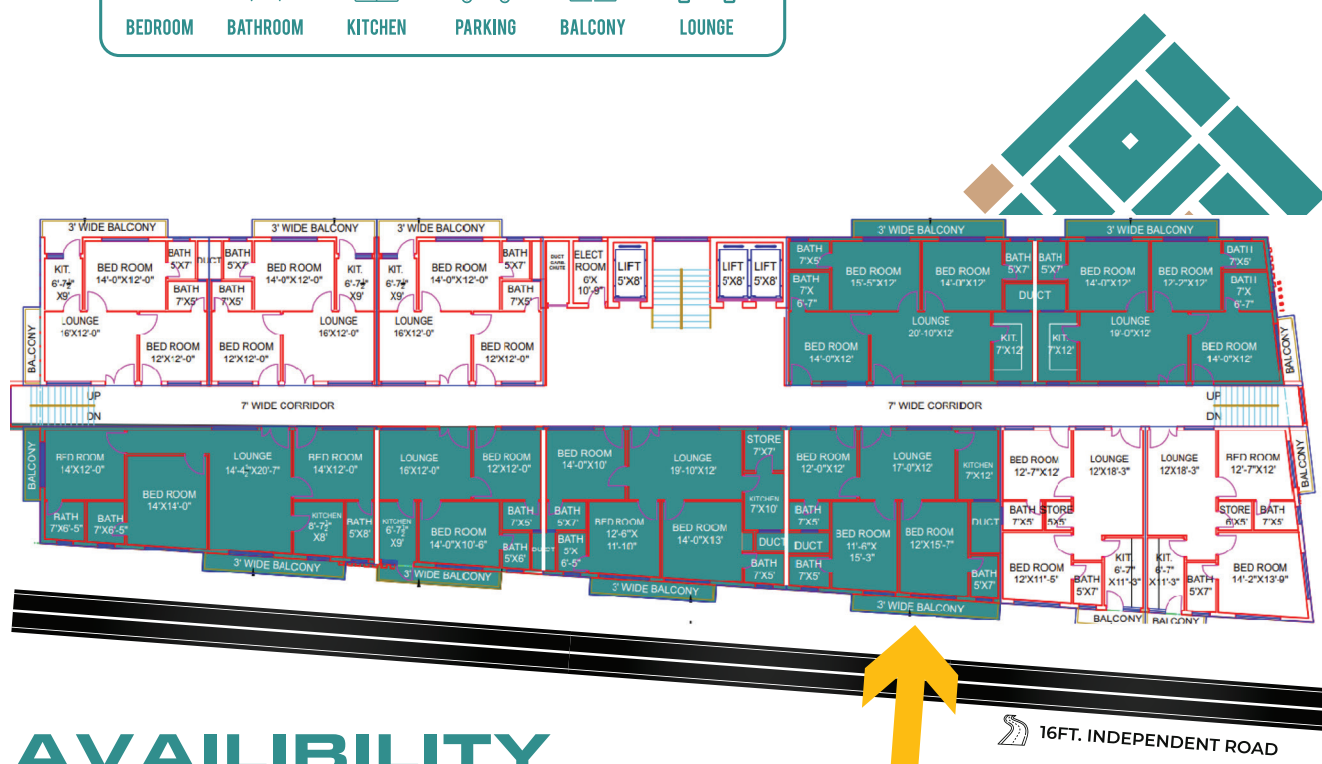
Description	Milestone	%age	Amount
Downpayment	Booking Amount in 2 Months	30%	3,894,360/-
Installments	42 Months Installments	1%	154,538/-
Final Payment	On Possession	20%	2,596,240/-

3 BEDROOM APARTMENT

1415 SQ.FT

FLOOR PLAN

Area: 1415 Sqft
 Bedroom: 3
 Bathroom: 3
 Parking: 1
 Lounge: 1
 Kitchen: 1



AVAILABILITY FLOOR WISE

3RD, 4TH, 7TH, 8TH, 9TH

APARTMENT LAYOUT



***UNIVERSITY TOWN VIEW**

PRICE PLAN

Area (Sq.ft)	Per Sq.ft	Discount	Total Price
1415	9200/-	Not Proposed	13,018,000/-

**45 months payment plan*

Description	Milestone	%age	Amount
Downpayment	Booking Amount in 2 Months	30%	3,905,400/-
Installments	42 Months Installments	1%	154,976/-
Final Payment	On Possession	20%	2,603,600/-

3 BEDROOM APARTMENT

1443 SQ.FT

FLOOR PLAN

Area: 1443 Sqft
 Bedroom: 3
 Bathroom: 3
 Parking: 1
 Lounge: 1
 Kitchen: 1



AVAILABILITY FLOOR WISE

7TH

APARTMENT LAYOUT



*AIRPORT VIEW
(CORNER)

PRICE PLAN

Area (Sq.ft)	Per Sq.ft	Discount	Total Price
1443	9200/-	Not Proposed	13,275,600/-

*45 months payment plan

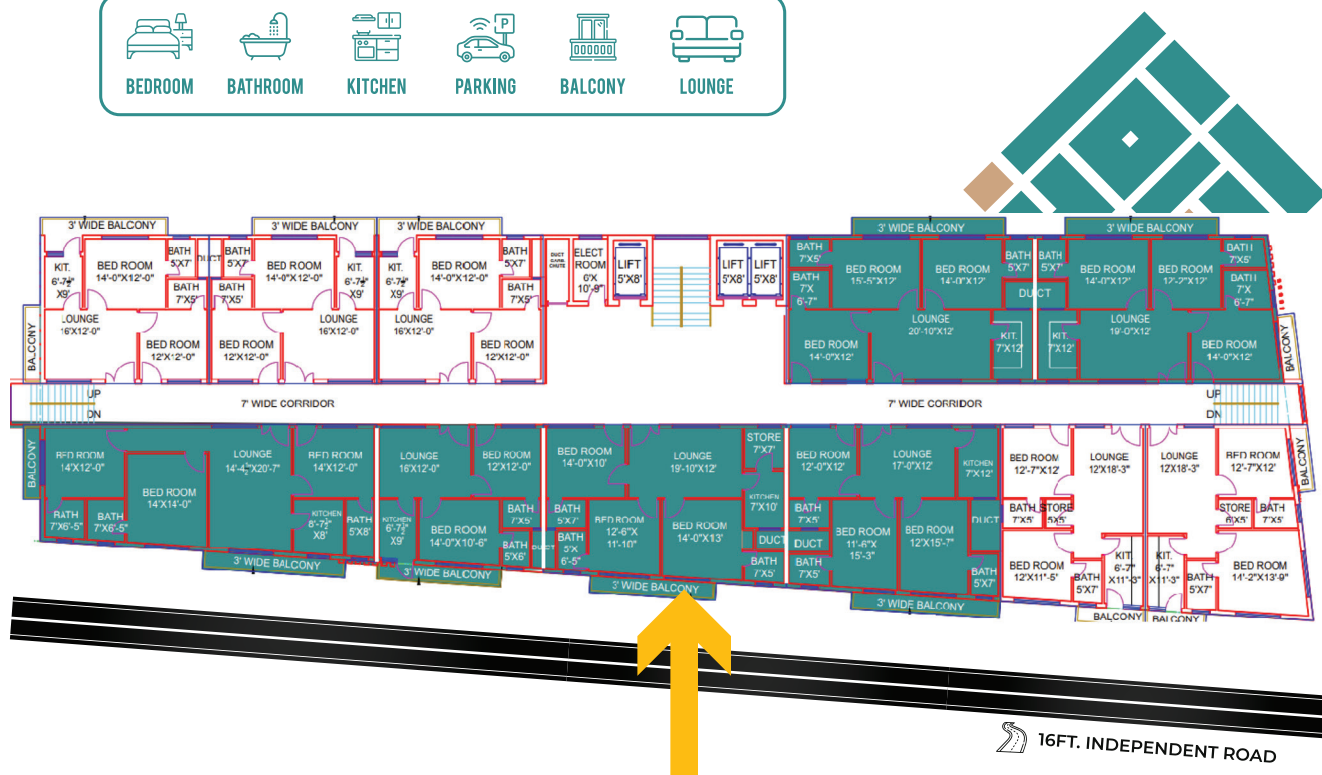
Description	Milestone	%age	Amount
Downpayment	Booking Amount in 2 Months	30%	3,982,680/-
Installments	42 Months Installments	1%	158,042/-
Final Payment	On Possession	20%	2,655,120/-

3 BEDROOM APARTMENT

1451 SQ.FT

FLOOR PLAN

Area: 1451 Sqft
 Bedroom: 3
 Bathroom: 3
 Parking: 1
 Lounge: 1
 Kitchen: 1



AVAILABILITY FLOOR WISE

4TH, 5TH, 7TH, 8TH, 9TH

APARTMENT LAYOUT



*UNIVERSITY TOWN VIEW

PRICE PLAN

Area (Sq.ft)	Per Sq.ft	Discount	Total Price
1451	9200/-	Not Proposed	13,349,200/-

*45 months payment plan

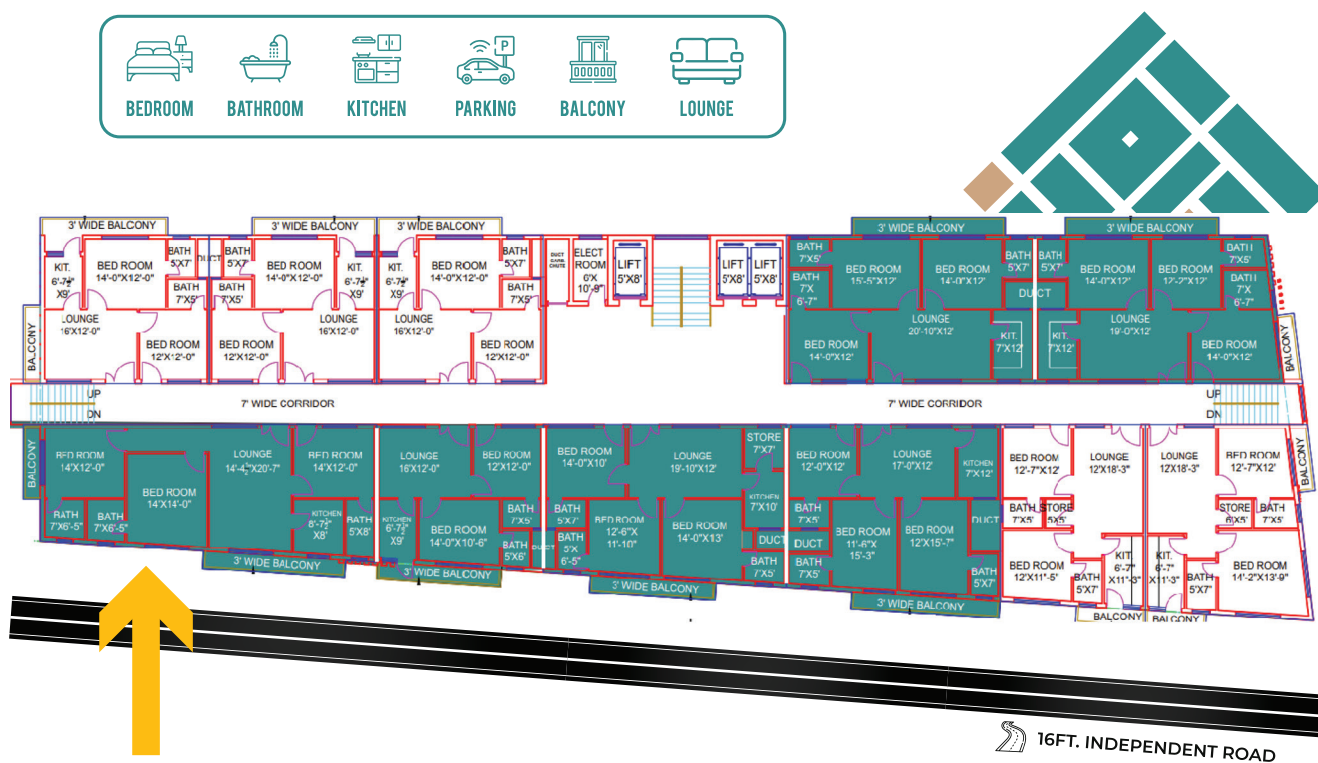
Description	Milestone	%age	Amount
Downpayment	Booking Amount in 2 Months	30%	4,004,760/-
Installments	42 Months Installments	1%	158,844/-
Final Payment	On Possession	20%	2,669,840/-

3 BEDROOM APARTMENT

1709 SQ.FT

FLOOR PLAN

Area: 1709 Sqft
 Bedroom: 3
 Bathroom: 3
 Parking: 1
 Lounge: 1
 Kitchen: 1



AVAILABILITY FLOOR WISE

GF, 3RD, 4TH, 6TH, 7TH, 8TH, 9TH

APARTMENT LAYOUT



***UNIVERSITY TOWN VIEW
(CORNER)**

PRICE PLAN

Area (Sq.ft)	Per Sq.ft	Discount	Total Price
1709	9200/-	Not Proposed	15,722,800/-

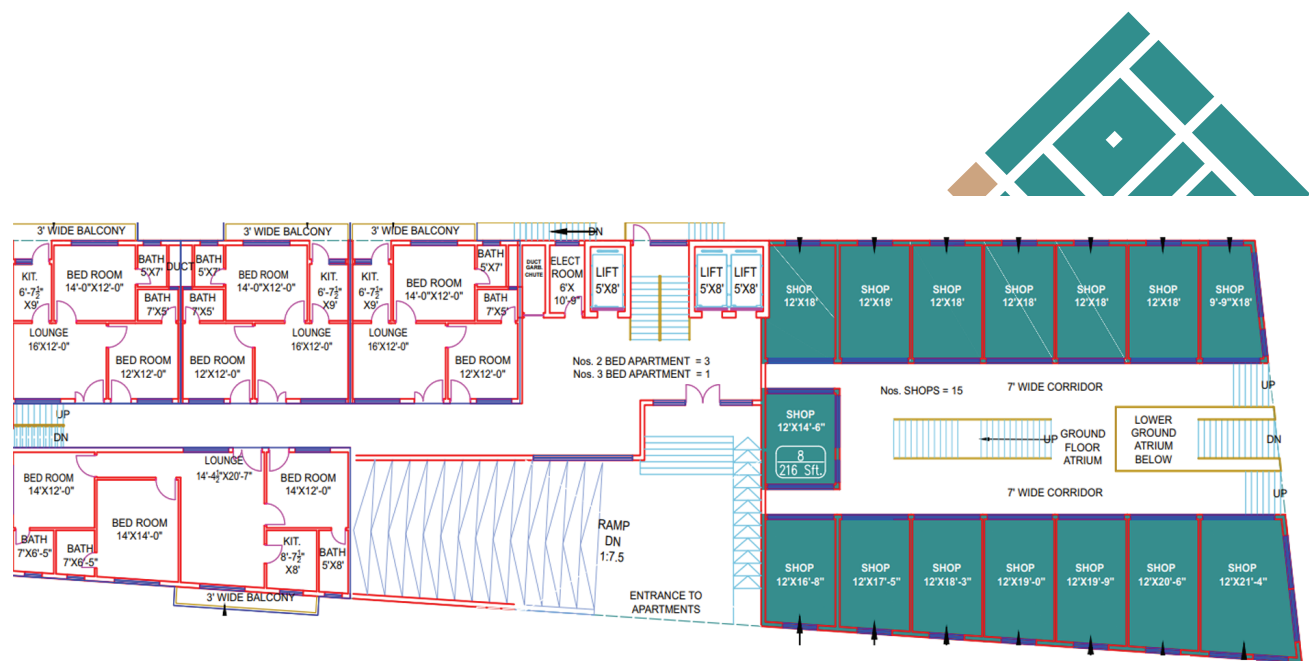
**45 months payment plan*

Description	Milestone	%age	Amount
Downpayment	Booking Amount in 2 Months	30%	4,716,840/-
Installments	42 Months Installments	1%	187,176/-
Final Payment	On Possession	20%	3,144,560/-

COMMERCIAL SHOP

240 SQ.FT

FLOOR PLAN



COMMERCIAL LAYOUT



PRICE PLAN

Area (Sq.ft)	Per Sq.ft	Discount	Total Price
240	38000/-	Not Proposed	9,120,000/-

**45 months payment plan*

Description	Milestone	%age	Amount
Downpayment	Booking Amount in 2 Months	30%	2,736,000/-
Installments	42 Months Installments	1%	108,571/-
Final Payment	On Possession	20%	1,824,000/-